

Green Village, Malang

client

PT. Bumi Nusantara Megah

date

2012

scale

30 ha

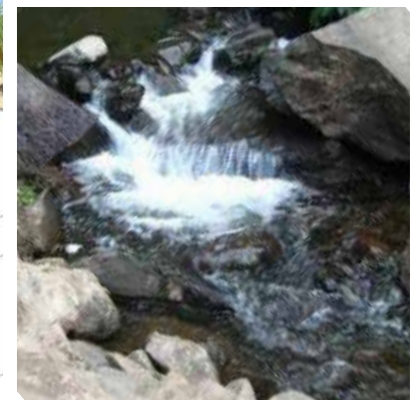
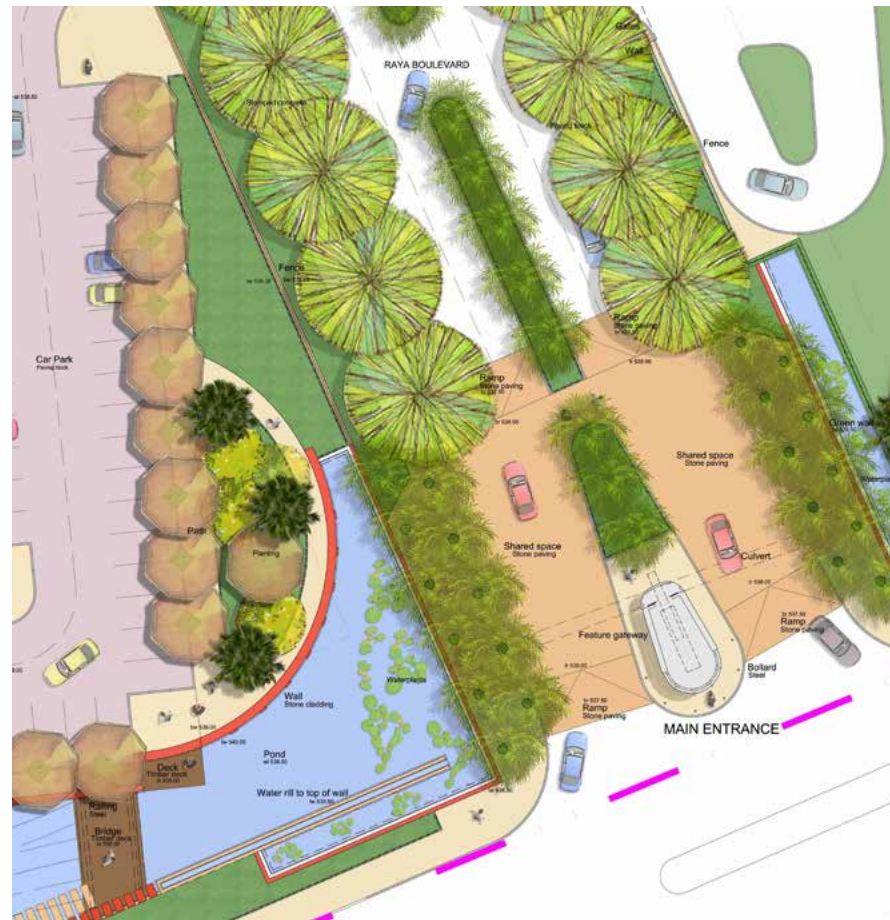
design team

PTI Architects

This elegant landscape interprets natural forms and patterns of vegetation to create a stunning environment which forges connections to Malang's dramatic volcanic landscape setting.

The driveway through the centre of this new community is aligned to direct views towards Mount Anjasmoro, a landmark throughout Malang. The terraced and stepped landforms, ponds and water cascades echo the eroded gully forms on the lower slopes of the volcano. Water is also a recurring theme, making use of the three streams that flow across the site.

Each of the housing clusters has its own distinctive pocket park, which acts as a gateway and focus for community life. For instance, the reflective pool, dramatic shade structure and angled viewing deck of the *Mountain View Garden* provide a setting for views to Mount Anjasmoro, while the formal geometry of *Two Streams Park* is highlighted by its surrounding moat and grid of trees. In the enclosed *Courtyard Garden*, the curved forms of the play area and rippling lawn define walkways across the park and contrast with the formal pleached tree surround.





Mountain View Garden

An elevated park, aligned to take advantage of long views towards Mount Anjasmoro



Two Streams Park

A timber deck/stage doubles as a platform for comfy outdoor sofas where parents can watch their children at play.



Courtyard Garden

Lines of pleached trees complement the enclosing built facades, while a rippling lawn and scattered chairs contribute a sense of play.

