

London Regional Landscape Framework.

client

Natural England

date

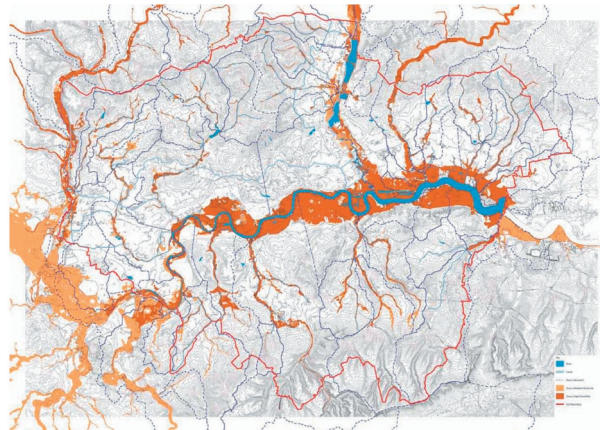
March 2009

lead consultant

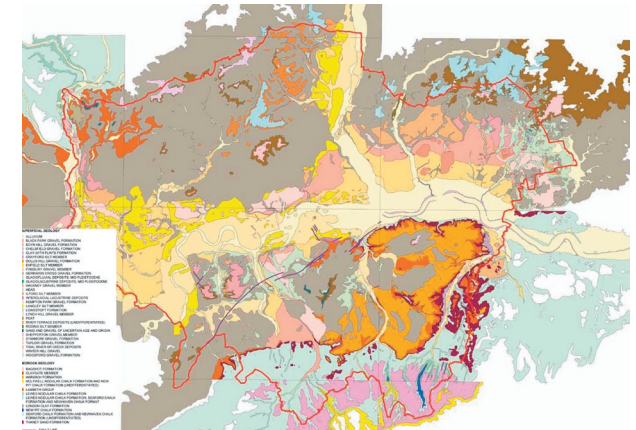
Alan Baxter Associates

This study was led by Sheils Flynn's London office. It aims to raise the profile of London's natural landscapes. It identifies London's 'Natural Signatures' as a means to promote conservation & enhancement of existing remnant natural landscapes and 'design clues' to influence future new development.

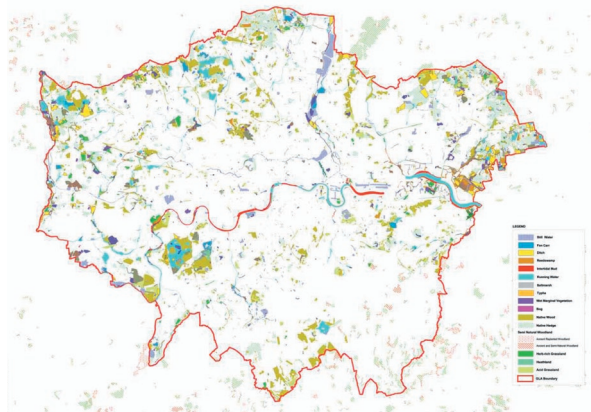
The London Regional Framework was led by Alan Baxter Associates. It aims to highlight the rich variety of London's natural landscapes, embedding their 'Natural Signatures' into perceptions of London and influencing decisions about the future of its network of open spaces (within the existing urban fabric and new developments). Sheils Flynn was responsible for developing a landscape typology for London as a basis for identifying key natural landscape features, Natural Signatures and landscape strategies which seek to reinterpret and express the Natural Signature within future new development sites, restoration projects and the management of existing open spaces.



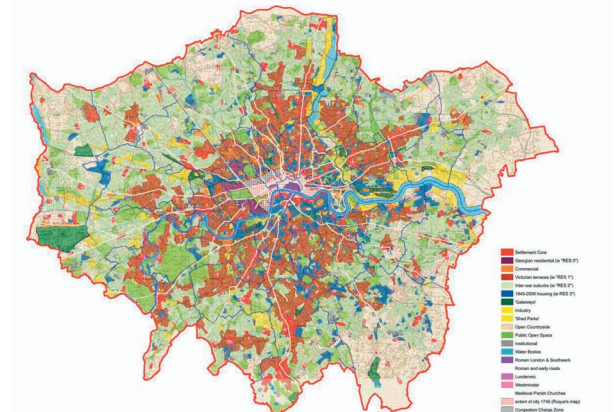
Bedrock & superficial geology



Topography & drainage



Natural habitats



Historic development

Images top lhs to bottom rhs:
 Bedrock and superficial geology - The British Geological Survey Licence 2006/072J British Geological Survey © NERC. All rights reserved.
 Topography and drainage - Contour data: © Crown Copyright all rights reserved, Natural England 100046223 2009.
 River data: Environment Agency reserved.
 Natural habitats Data - GIGL.
 Historic development - Data English Heritage (Rapid Historic Characterisation).
 All GIS Maps by Alan Baxter.