

Gudang Garam Complex

client

PT Surya Madistrindo

date

2010

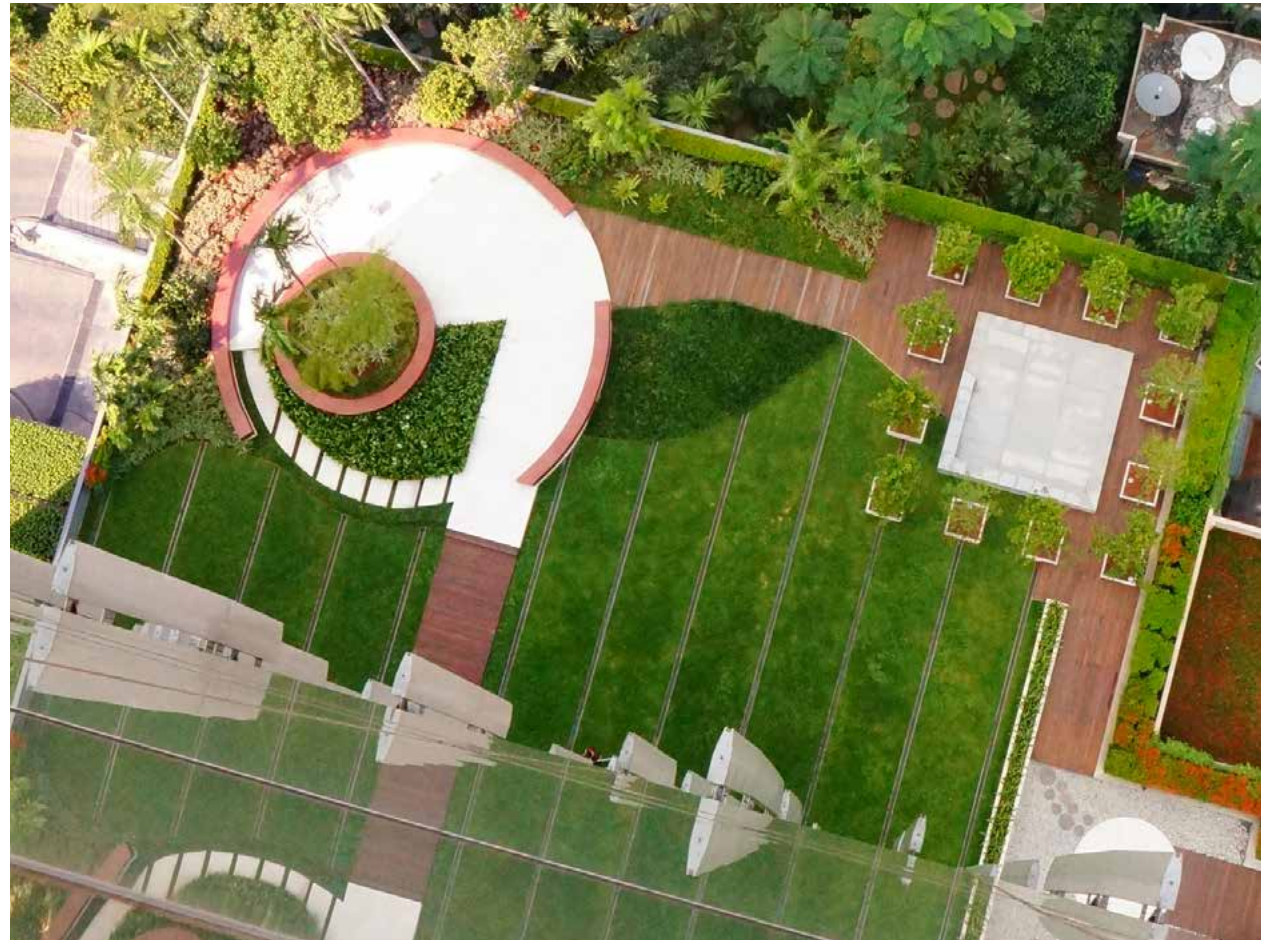
design team

PT. Anggara Architeam (Architecture)

Imagery from the tobacco plantations of East Java has inspired a landmark landscape, designed to be seen and enjoyed.

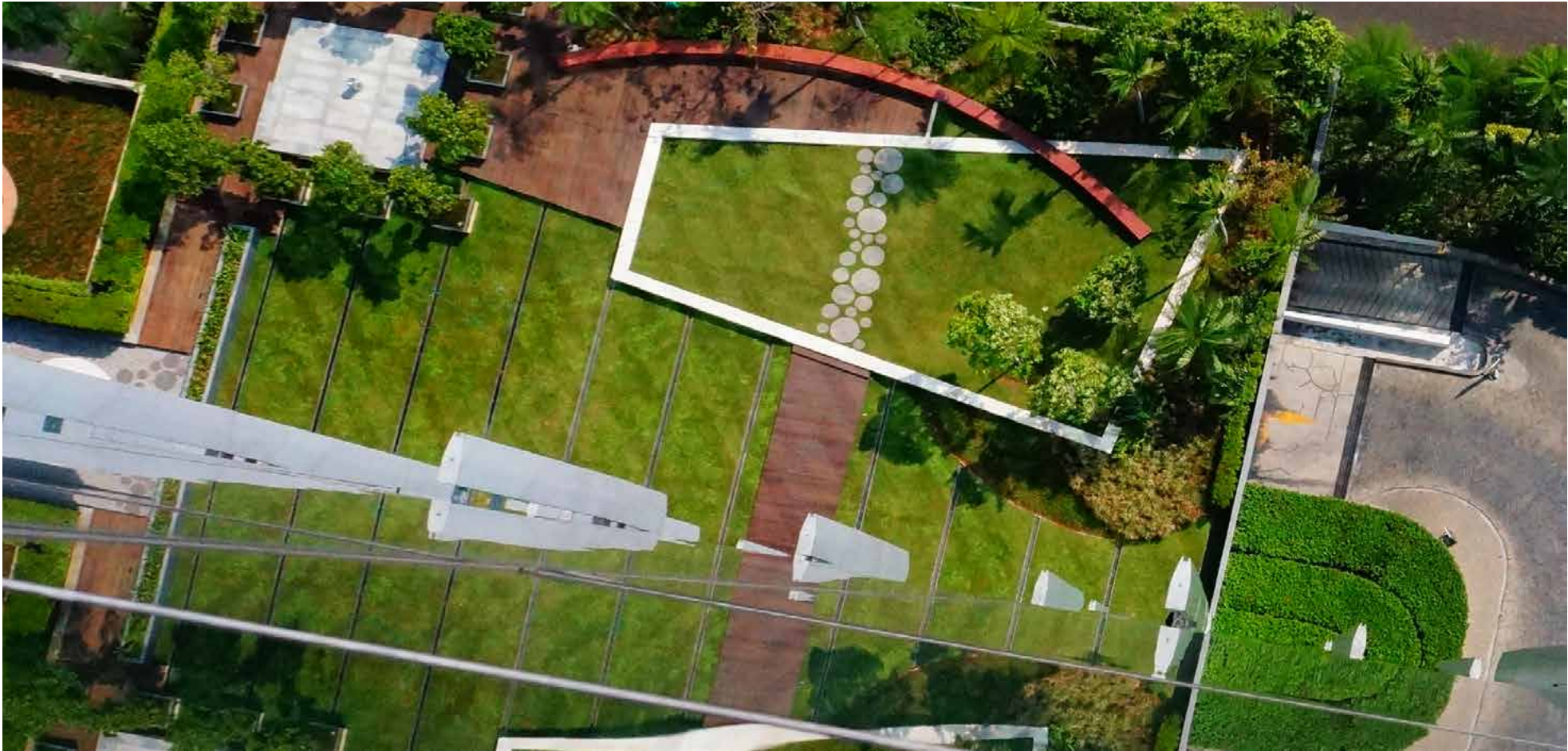
The digital clock on the existing Gudang Guram tower has long been a historic landmark on the Jakarta skyline so it is fitting that the new office complex also has an iconic presence. Its location, next to the Jalan Toll, prompted a built form with a raised podium which provides superb opportunities for panoramic views.

The landscape design draws on imagery from the tobacco plantations of East Java. Visitors reach the podium via a gently spiraling ramp which passes through a dense 'green wall' of planting. The decks, pools and planting on the roof terraces reflect the geometry of the cropped fields, gridded clove trees and drying racks surrounded by native forests. In one corner a café is shaded by striking canopies which echo the form of tobacco leaves.





decks and seating walls amidst a lush rooftop environment with stunning panoramic views



The decks, pools and planting on the roof terraces reflect the geometric landscape patterns of East Java's tobacco plantations